

# IMMANUEL LUTHERAN CHURCH & STUDENT CENTER

June / July 2010



## *Sunday Worship Times*

**9:00 A.M.**

## *Adult Sunday School Classes*

**10:15 A.M.**

## *Summer Office Hours*

**M– Th: 8:30—4:30**

**Friday by appointment**

**Pastor:** Rev. Marty Marks,  
815-754-5590 (h); Rev@godwithusilc.org

**Pastor:** Rev. Ray Krueger; 815-756-2515  
(h); rkrueger@godwithusilc.org

### **Director of Youth, Outreach & Christian Education:**

Barney Schroeder ; 815-754-0855 (h);  
Barney@godwithusilc.org

Rev. E. Geo. Krause, *emeritus*  
756-7607 (h); pk@godwithusilc.org

**Elders:** Nathan Allen    David Campbell  
Chris Cook    Brian Kozumplik  
Jim Grunwald    Ted Stone

*Emergency contact elder for June / July:*  
Chris Cook: 815-756-8653

### **Preschool:**

LittleLambs@godwithusilc.org  
*Director/Teacher:* Linda Freeland  
*Teachers:* Gail Tomko  
Kathleen Campbell

### **Faculty Advisor to LSF:**

Dr Mark Mistic

### **Office Support Staff:**

Darlene Hillman (*Office Manager*)  
Rhonda Harmon (*Secretary*)

### **Office Information**

Monday—Thursday: 8:30—4:30 p.m.  
Friday: by appointment only  
Telephone: 815-756-6669  
Campus Ministry: 756-6675  
Fax: 815-756-9585  
Email: office@godwithusilc.org  
WEBSITE: www.godwithusilc.org

## **A ROAD LESS TRAVELED**

—PASTOR RAY

As I thought about our commitment to intentionally reach out to the residents of University Village, international students and their families and people needing to be restored to our community, I thought of this poem.

### **The Road Not Taken**

Two roads diverged in a yellow wood,  
And sorry I could not travel both  
And be one traveler, long I stood  
And looked down one as far as I could  
To where it bent in the undergrowth;

Then took the other, as just as fair,  
And having perhaps the better claim  
Because it was grassy and wanted wear,  
Though as for that the passing there  
Had worn them really about the same,

And both that morning equally lay  
In leaves no step had trodden black.  
Oh, I marked the first for another day!  
Yet knowing how way leads on to way  
I doubted if I should ever come back.

I shall be telling this with a sigh  
Somewhere ages and ages hence:  
Two roads diverged in a wood, and I,  
I took the one less traveled by,  
And that has made all the difference.

Robert Frost

God leads us to a path less traveled.  
Jesus says in Luke 10: “The harvest is plentiful, but the laborers are few. Therefore, pray earnestly to the Lord of the harvest to send out laborers into his harvest. Go your way; behold I am sending you out as lambs in the midst of wolves.” Following Jesus is challenging, but He promises to be with us and to bless our going. It is my prayer that we, together embrace the opportunity God has lain before us that we may be the blessing He intends us to be in our community. Allow God to use you to walk on this new path! Let us rejoice in this day and every day the Lord gives us!

Your Servant,

Pastor Ray

## **THE MESSINESS OF SIN**

—PASTOR MARTY

At the time of this writing the Deep water Horizon oil well disaster is still big news. The oil well has not been capped (stopped) and oil is now washing up on beaches across several states in the Gulf of Mexico. While the issue is near and dear to my heart, as I have spent the last 5 years with our college students working to restore this fragile environment, I’m writing not so much about the spill, or the actual battles coming out of it on a political, economic or environmental level, but on how the entire event is a metaphor for how sin pollutes our world.

The disaster which was begun by an explosion on the oil rig took the lives of 11 people immediately. Sin can often have an “explosive nature” to it. Anger, hate, rebellion of any kind can cause instant death (separation from God.) At the time of this writing the true cause of the explosion is still not known, or at least where the failures to safe guard against the explosion happened. Fingers are being pointed at a number of companies: BP the company that is in charge of drilling; Trans Ocean, the company that operates the rig on behalf of BP; and Haliburton,

(Continued on page 2)



**Immanuel  
In  
Mission:  
The  
Mission of  
Immanuel  
Lutheran Church  
is  
connecting  
people to  
Jesus Christ.**

*(Continued from page 1)*

the company that just the day before installed some of the cement safety features that should have helped prevent such explosions. When sin “explodes” and causes pain in people’s lives the natural first reaction is to blame others. Blame assuages our own guilt and it gives us a place to channel our anger away from ourselves. It also gives us the false sense of security that some one else should have to pay for the mess. Blaming others is nothing new, Adam and Eve did it in the Garden after the first sin and it has become a mainstay of people’s reactions ever since.

Then came the cover up... BP hoped to keep the size of the spill and the amount of Oil secret with the hope of cleaning up their own mess. This led the coast guard to early on declare that there is no spill and nothing more to worry about. Sin can cause us to mislead and hinder those who are prepared to help us because of guilt, fear and the increasingly messiness of sin. After the truth was revealed that there was oil spilling in to the gulf, many more days went by with BP concealing what information they may have known, hindering even more the hope of a united response to the problem. As oil began washing ashore, the blame game began to spread beyond the companies involved and Governmental agencies were being attacked for their failures to respond and even the President found himself under fire for what roles he has or has not played in working on the problem. The mess (the oil) continues to spread, but so does the blame, the anger and the consequences for all. Communities that are very depressed and poor and that survive each year (barely) on their tourist season which involves beach front hotels, sport fishing and also “Shrimping and Crabbing” industries are at a total standstill. Peoples lives as well as their livelihood are in great danger. What is also becoming evident is that nature is also being effected. Animals, plants and even microorganisms are being damaged and destroyed (killed!) by the oil. The oil is difficult to remove and sticks to everything. Simply put, there is a giant mess! Just like SIN is!

What will it take to clean up this mess? On a human level, it will start with forgiveness, but need to be followed up by cooperation along

with sacrifice. No doubt there will be sacrifices made by the people of gulf coast , but for real healing there may need to be some real sacrifices made by others across our nation. The companies responsible will be to be held accountable, and as possible, restitution should be made, but grace and mercy will need to be part of these conversations. The final component will be time. As time passes things will be made better, if forgiveness, cooperation and sacrifice are the cornerstones of the solution.

Continuing the metaphor, how is our mess of sin cleaned up in the spiritual sense? With those same components, but shown by God, not by man (at least not at first.) God shows forgiveness for the sins that have been committed against Him (which are all of them, of course!) He then is willing to sacrifice to make sure the sins are dealt with by giving up His own son to “absorb the mess.” Yes, the oil makes a pretty good image here. A seemingly unstoppable spreading mess can be absorbed into the person of Jesus and removed once and for all. But then we get to the part of man... God still desires the cooperation component. He needs us to play a part, or at least invites and desires us to play that part. He desires for us to collaborate with one another to help restore healthy relationships between people and even nature. We are part of the long term clean up effort. Lives have been lost, damaged and completely messed up by sin. God asks us to be his presence to apply the absorbing power of Jesus to what ever mess we come across, whether spread by us or by others. We are called to show love, forgiveness and compassion (entering into the suffering of others) as His “body on Earth.”

I pray as the summer unfolds the oil spill disaster in the gulf provides an opportunity for people to help and care of one another and we can grow as people thought the experience. I also pray that as we experience sin and its devastating and messy effects we too may receive Jesus healing and cleansing power, and that we will help to join up the cleanup crew in anyways we can be of assistance!

Enjoy your summer!

In Christ,  
Pastor Marty

## WHAT ARE THE NEW MINISTRY OPPORTUNITIES THAT ARE BEING PROPOSED AT IMMANUEL?

A six member grant writing committee (Linda Sons, Jennifer Allen, Dennis Maakestad, Pastor Marty, Pastor Ray, and DCE Schroeder) has carefully studied new ministry possibilities comparing them with our current staff and has diligently been working on writing grant proposals for possible financial support. At this time two grants have been applied for with a third proposal due by June 15. We will have to wait a few more weeks to see what kind of answer we receive from our requests.



The grants have been similar yet different in nature and the amount available. For the NID ABLAZE grant we listed the specific goals as:

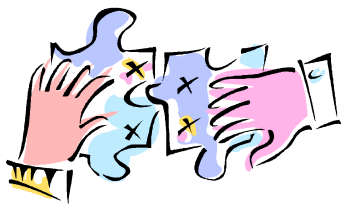
1. To establish an ongoing and growing reciprocal relationship with residents, families, and staff at University Village.

To intentionally connect these residents with Jesus Christ through the members of Immanuel.

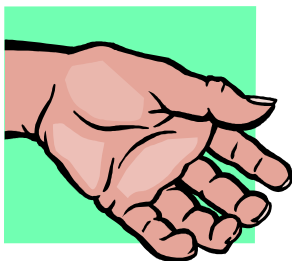
2. To develop new family-of-Christ connections between members of Immanuel and International Student families by bringing a new focus on this often-forgotten group of people on the NIU Campus as they are also part of our “geographic community.”

3. To involve the People of Immanuel in developing intentional relationships to provide oversight, mentoring, and coaching at least 10 individuals per year needing to fulfill requirements of community service hours through the court system.

A garden will be used to accomplish all 3 goals and people from each of the three groups as well as Immanuel members will be involved in its success.



This is a change and a unique new ministry for the members of Immanuel. We have had our DCE, Barney Schroeder to be involved with teaching International students but the emphasis on this new ministry will be for more members of Immanuel to develop relationships with the Internationals in our community. Even though the University Village Complex is only a block away from the church’s location there has been little success in connecting with these neighbors. We will intentionally reach out to develop more connections to the residents there through our Hope Garden project, through such programs as a summer reading program (which we did in the summer of 09), multiple VBS programs, parenting programs, and tutoring for children. Help with each of these will be needed from members. Currently there has been much work on our property done by several young people in the community which have been required to do “community service hours”. It is hoped that this will continue and expand only with greater involvement by other members besides the current DCE.



Our present staff and current leaders are excited about these new possibilities but this will involve change in both staff job descriptions and responsibilities along with greater involvement from members. A special transition committee is meeting to work out and coordinate a smooth change in all of the staff job changes. We have prayed about this, know that God has been leading Immanuel to take this step and hope that you will be able to step on board to be part of the journey as well.

# IMMANUEL YOUTH INVITED TO “DROP-IN!”

## Immanuel Lutheran Youth Group Summer Schedule

High school Youth Group will be from 6pm to 8pm on Sunday nights at the Church unless noted. Youth are welcome to “drop in” any time during that time, but are strongly encouraged to be there by 6:30 when the event for the evening will begin.



## HIGH SCHOOL YOUTH GROUP NEWS!



The High school youth group will meet on most Sunday nights through out the Summer from 6pm until 8 pm.

Youth are welcome to “drop in” at any during the evening, but are strongly encouraged to be there

by 6:30 for the “event.” The Sunday that there will be NO youth group are June 20 (father’s day), July 4<sup>th</sup>, and July 18<sup>th</sup>

(When many of the group will be at the national youth gathering.) We look forward to a fun

but also spiritually enriching Summer for our high school age youth... please join us for Sunday nights and the other scheduled

youth events (such as the Car wash on June 27 after church!)



<u>Date</u>	<u>Event</u>
June 13	Game night
June 20	Father’s Day – NO meeting
June 27	Games
July 4	Holiday – NO meeting
July 11	5:30 Dinner
	6:00 Evan Almighty “Movie on the Church”
July 18	New Orleans Gathering – NO meeting
July 25	Mini golf
August 1	Movie on the church
August 8	Service event
August 15	Games
August 22	3:00 Board meeting at Clarks
	4:00 (Tentative) pool party/ potluck (confirmation youth included)

## FLAMINGO GREETINGS



FLAMINGO GREETINGS ARE COMING! Watch out for these pink birds landing in your yard sent by a friend? These birds have been seen flocking to-

gether to help connect members together, to produce a smile or two, and to raise funds for sending youth to the next national LCMS youth gathering in New Orleans next summer.

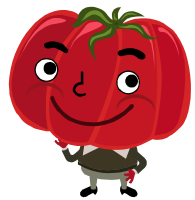
## YOUTH CAR WASH



Youth are planning a car wash on Sunday, June 27 following the worship service on that morning.

In addition a providing the opportunity to have cars washed the youth are looking to provide for a drink and refreshment while you wait. Watch the bulletin for more information.

## HOPE GARDEN



Immanuel is initiating a garden project to reach out to the residents of University Village. In an effort to connect with the people living in this neighbor-

hood community a small garden plot of 25 foot square had been tilled for harvesting all types of nutritious produce. It is hoped that the labor for this effort will come from some

of the recipients of the vegetables, community members who need service hours, and from some of our members willing to share time and develop a relationship with a member of this diverse neighboring community. “Hope Garden” is a new outreach endeavor to provide hope for people who struggle with food needs, a greater sense of community.



## LITTLE LAMBS PRESCHOOL

May was our last month of preschool classes, and it was a busy and exciting month. On May 3, 2010,

we held our Spring Sing & Silent Auction. Our preschool children did an excellent job singing for their families and friends. Our Silent Auction was also very successful. We raised \$3300 dollars that evening for our preschool. Special thanks to Holly Durst for chairing this event. Thanks to all our Silent Auction committee members and to everyone who donated items and participated in this event.

In May, our preschool children had a field trip to the YMCA. First, we had a tour of the facility. Then we learned about healthy foods and played a game that helped us learn which foods are best for our bodies. Next, the children had a special active time where they either worked on soccer skills, or they had fun going through an obstacle course and playing with a parachute. In our last session, the preschool children learned about water safety and got to try on life saving vests.

Our four-year-old classes also took a field

trip to Domino's Pizza. Each child learned how to make his or her own pizza. The children discovered that even though making pizzas is a lot of fun, the best part was eating their own handmade pizzas.

On May 26 & 27, we held our Preschool Graduation & Family Picnic. This year we chose an ocean theme for our graduation activities. The children wore ocean themed t-shirts and hats that they made for themselves at preschool. Graduation began with the children singing special songs for their parents. Each child then received a special Graduation Certificate. Next, we reviewed our year in pictures as we watched a Little Lambs Preschool Slide Show Presentation. Following the slide show, we had our family picnic. We have had a great year with many special memories that we will treasure.

I would like to take this opportunity to thank all our parents and members of Immanuel Lutheran Church for your continuous support during our school year. Have a great summer!

Linda Freeland, Director

### SPECIAL POINTS OF INTEREST

- For those students that will be attending preschool in the 2010-2011 school year, the last month's tuition payment (May 2011) is due on or before June 1, 2010. This payment will secure your child's spot in our program next year.
- Preschool Committee meeting is scheduled for Monday, August 2 at 6:30p.m.
- Preschool Orientation is scheduled for August 25 & 26, 2010, at 6:30 p.m.
- The first days of preschool classes are Tuesday, September 7th and Wednesday, September 8th.



## CHRISTMAS IN JULY~

The spirit of giving and sharing is alive and well at Immanuel!

Our congregation shows this through all that we support and do. Let's celebrate and give to children this July, as we have done before. You'll see the Christmas tree up again with red, white and blue decorations. This is your sign to stock the bottom of the tree with presents for babies, children and teens. Our Christmas gifts will be given to the Salvation Army for use during the holiday season. The need is great in all areas! We get the collection started for them by celebrating in July!

**Some ideas are:** Games, books, art supplies, science kits, craft kits, cars, dolls, jewelry, movies, sports equipment, baby toys, bath toys. . . . And more ideas in any toy department of our local stores.

By giving, we support the work of the Salvation Army in our community and county.

## RELAY FOR LIFE—CELEBRATE. REMEMBER. FIGHT BACK

On June 18-19 our congregation will watch it's first relay team walk for cancer. The event takes place at the Sycamore Park, beginning at 6 p.m. All of the communities are invited to attend. Anyone can come to walk with the team for any part of the evening. At dusk a ceremony lighting the luminaria along the track will happen. All of the names listed on these luminaria will be read.

*"Through Relay for Life, the American Cancer Society mobilizes the world's largest movement to defeat cancer once and for all. And we do this by raising funds to fight for every birthday, threatened by every cancer, in every community. Here's how we invest every dollar raised.*

*0.74= for research funding, cancer-fighting programs around prevention and early detection, and free services to give cancer patients their best chance to get well.*

*0.17= for community events and programs to raise funds for our mission and offer healing for those who have lost loved ones to cancer.*

*0.09= for general costs and overhead. We hold expenses in check to put maximum focus on our lifesaving mission."*

Immanuel's team is selling suns and moons in honor or memory of someone who faced cancer, for \$1.00 each. Also, each team member is seeking donations towards the fund. If you don't get asked and can find it in your heart to donate, please see the list of team members at the table and find one of them to financially support. You are invited to join the team for any part of the walk! Let's celebrate, remember and fight back!

## COUGHING, HACKING.....ASTHMA???

— Jeneane Bejnarowicz, R.N., T.N.S.

Asthma is a chronic inflammatory airway disorder. It is characterized by airflow obstruction and airway hyper-responsiveness to multiple stimuli.

It can be a type of Chronic Obstructive Pulmonary Disease.

It can be caused by pollen, animal dander, house dust, or mold, kapok or feather pillows, food additives containing sulfites. Did you know that wall-to-wall carpeting is one of the worse offenders?!

Other causes can be irritants, emotional stress, fatigue, endocrine changes, temperature variations, humidity variations, exposure to noxious fumes, anxiety, and genetic factors.

Bronchial constriction can cause difficulty breathing, wheezing, tightness in the chest. Excessive mucus production can cause coughing and thick sputum.

Of course, you know that cigarette smoke is one of the "noxious fumes"!!!



**Vacation Bible**

**School Dates**

**Are on the  
calendar!**

**June 14,15, 16**

**(Mon– Wed)**

**There will be a closing  
program at**

**Walcamp on  
Wednesday, June 16  
at 3:00 p.m. All**

**members and friends  
of Immanuel are en-  
couraged to attend!**



## BOOKCLUB

**June 28th Where There's a Will,**  
by Beth Pattillo

**July 26th Wildwater Walking Club,**  
by Claire Cook

**August 30th Chewing Gum & Holy Water,**  
by Mario Valentini

**September 27th Kubul Beauty School,**  
by Kristin Ohlson

The book club meets at 7:00 p.m. in the high school room. Come and enjoy discussing books, invite a friend.



**Immanuel Family  
Camp**

**Weekend!**

Mark your  
calendars for the  
**Immanuel Family  
Camp Weekend**  
at Walcamp

**June 18-20, 2009**

### FINANCIAL UPDATE

We have committed to ensuring that all of us remain informed regarding our current financial status. Here are the results of the first two months of our current fiscal year.

Our Voters approved to begin making principal and interest mortgage payments beginning 05-27-10, two months before we were required to begin making principal payments again. Beginning payments early will save our congregation \$ 7,716 over the term of the loan. This means that beginning in May, our overall expenses will increase by approximately \$ 2,500 per month.

Our voters also approved a budget of \$ 593,278 for fiscal year 2010/2011 compared to our current budget of \$ 533,638. \$30,000 of this increase is the result of returning to principal mortgage payments that were not paid in this past year's fiscal budget. \$ 15,000 of this increase is allocated to pension and welfare benefits partially due to a \$10,000 shortfall in projection for the current fiscal budget year. Almost \$ 11,000 is projected for our new ministry area (\$ 5,500 of this has been donated already).

Total giving projection for 2009/2010 (current fiscal year) \$ 541,712

Giving projection for 2010/2011 (Based on 4% increase) \$ 563,380

Giving projections from special sources

Grants/special donor (\$ 5,500 received)	\$ 45,000
--	-----------

Campus Ministry Solicitation	\$ 2,000
------------------------------	----------

Increase in Little Lambs Tuition	\$ 2,970
----------------------------------	----------

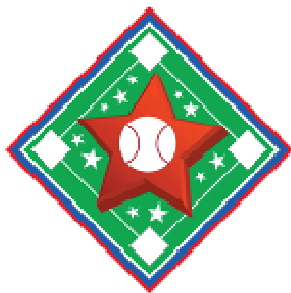
Student Seminary Fund Collected	\$ 1,800
---------------------------------	----------

Total Giving from all projected resources 2010/2011	\$ 615,150
---	------------

Our current budget calls for no increases for salaried workers of the congregation, but the congregation will review after January 1, 2011. This is the second consecutive fiscal budget salaried workers have received no increase.

What can you do? If you can, make a special gift. If you can, consider increasing your weekly/monthly/annual giving. Do what God enables you to do. Continue to pray for our congregation that we may continue to grow in our understanding of stewardship and that God would continue to bless us with His gifts of time, talent and treasure for the building up of the Kingdom of God that all may come to know Jesus and that He would use us in the process of connecting one another and the world to Jesus.

Your servants, the Stewardship Committee



## A DAY OF HONOR AND RECOGNITION FOR DR. LINDA SONS

Greetings all!

As most of you know, Dr. Sons has served as the faculty advisor for the campus ministry at Immanuel Lutheran Church (Serving NIU) for 44 years. She retired from the University last year and has also stepped aside as faculty advisor. We would like to honor her and her service to the Lord on Tuesday, August 3<sup>rd</sup> by attending a Chicago Cubs game together. If you did not know, Dr. Sons is a HUGE Cubs fan and she agrees that this is a great way to celebrate with her! At this time we have purchased a block of tickets and if demand is great we can add more. It is an evening game (7:05 p.m. start) and those who are able can join us for a dinner before the game as well. Details will follow on this later.

If you would like to purchase some of our "group tickets" please contact Pastor Marty Marks ASAP and reserve your tickets (and pay ASAP since they are on the Church's credit card). Tickets will be \$41 per person and are in the Outfield Terrace reserved section.

I look forward to a day of honoring a great friend and sister in Christ, and also enjoying a very fun evening at Wrigley Field cheering for the Cubs!

~Blessings, Marty Marks



<u>Station</u>	<u>City, State</u>	<u>Freq</u>	<u>Band</u>
WGN	Chicago, IL	720	AM
	Sun	6:00 AM	
WMCW	Harvard, IL	1600	AM
	Sun	9:05 AM	
WGSL	Rockford, IL	91.1	FM
	Sun	4:30 PM	
WKKD	Aurora, IL	1580	AM
	Sun	9:30 AM	
WRMN	Elgin, IL	1410	AM
	Sun	9:00 AM	
WKRS	Waukegan, IL	1220	AM
	Sun	11:00 AM	
WGVE	Gary, IN	88.7	FM
	Sat	10:00 AM	
WJOB	Hammond, IN	1230	AM
	Sun	11:00 AM	

<u>Woman To Woman</u>			
<u>Station</u>	<u>City, State</u>	<u>Freq</u>	<u>Band</u>
WRMN	Elgin, IL	1410	AM
	Sun	7:30 AM	
WGVE	Gary, IN	88.7	FM
	Fill		
WGVE	Gary, IN	88.7	FM
	Thurs	1:00 AM	
WGVE	Gary, IN	88.7	FM
	Tue	1:00 AM	
WJOB	Hammond, IN	1230AM	
	Sun	11:30 AM	

## THE LUTHERAN HOUR

**The Lutheran Hour**® which began in 1930, is the world's longest-running, Christian outreach radio program. It proclaims the message of Jesus Christ to more than 1.2 million people each week over 800 radio stations across North America. It is also broadcast on the American Forces Network to reach military personnel and their families around the world, as well as on XM's Family Talk Radio 170 each Sunday at 1:00 p.m. EST.

In this article find a list of topics that will be heard for this month on The Lutheran Hour. We have also included a listing of area radio stations that carry the program, along with their scheduled time to air.

### June 6 "What Did He Say?"

Speaker: Rev. Dr. Ken Klaus  
Jesus will bring resurrection life to us, just as He did for the young man of Nain, the daughter of Jairus, and Lazarus. The only difference is time. (Luke 7:13-15)

### June 13 "Talk Is Cheap"

Speaker: Rev. Dr. Ken Klaus  
Jesus doesn't just say the right words; He also did the right things. Talk is cheap, but Jesus paid the full price to redeem us. (Luke 7:39)

### June 20 "A Man's Declaration"

Speaker: Rev. Dr. Ken Klaus  
When men take a real look at the real Jesus, they'll see Someone quite different from the caricature of popular opinion. (Luke 8:38-39)

### June 27 "The First Responder"

Guest Speaker: Rev. Dr. Mark Larson  
Jesus' words, "Follow Me!" pose a challenge to those who are content and complacent. But to those who are lost and have no chance of finding their way, the words "Follow Me!" offer hope and rescue. Our guest speaker is the Rev. Dr. Mark Larson, Director of U.S. Ministries for Lutheran Hour Ministries. (Luke 9:51-62)

## CHRISTIAN SENIOR MINISTRIES—FIRST QUARTER REPORT 2010

As Christian Senior Ministries enters a new decade of mission ministry in DeKalb and Ogle counties one of the things we are doing is looking at new ways of being effective at what we are called to do. This involves not only how we go about our ministry, but also how we can increase our visibility within the communities in which we serve.

Over the past decade, we have been aware of where we are not satisfactorily fulfilling some of our objectives; those objectives being to (1) Provide regular worship services. (2) Provide regular Bible studies. (3) Provide personal, one-to-one visits. (4) Provide frequent opportunities to foster and promote Christian Fellowship. We have been good at providing Worship services and personal visits, but we have not been good at providing Bible studies and fostering Christian fellowship. We have stated in the past that we need help from our supporting congregations in these areas, but there is also more that we can do as well. And, as we enter this new decade, we will begin by focusing on these weaknesses.

We recently surveyed the facilities in which we serve asking the following questions: How would you rate the consistency or reliability of Christian Senior Ministries? Is CSM meeting the specific needs of the residents? What do you see as the benefits of this ministry? What suggestions would you offer for the improvement of this ministry?

Our reliability was rated as excellent and as vary important because this ministry is something that the residents look forward to. Concerning the other questions, I would like to simply share some of the responses. *We are blessed to have CSM that brings hope and love through God's Word, prayer, and song...The benefit I see is the spiritual growth in the residents. They are excited about the message and the messenger. They are feeling better emotionally as well...Everyone needs Jesus in their lives. Some who attend are unable to go out for services...The ministry affirms that the residents' lives have meaning...I learn about what to expect after death, no more sorrow, first of all meeting my Savior, my son and all my family. That is what I'm looking forward to...You give us our spiritual food and make us realize how God can supply our need and bless us each day...Since we can't go to church, you bring the Word to us which is a special blessing.*

As we strive to be more visible, we have registered with the DeKalb County Community Foundation and also the Kishwaukee United Way. You can be of help. Please Google Christian Senior Ministries and respond to their requests to comment on CSM and to share your experience as participants in this ministry. The board of CSM would like to once again make it clear that this ministry is here, and is able to move forward into a new decade only because of you. Thank you!

### THE BOARD OF CHRISTIAN SENIOR MINISTRIES

### ST. JAMES ALTAR & ROSARY SOCIETY SALAD LUNCHEON & CARD PARTY

St. James Altar & Rosary Society in Lee, IL, will have their **28th Annual Salad Luncheon and Card Party on Thursday, June 17, 2010**. Luncheon will be served from 11:00 a.m.—1:00 p.m. in the parish center. Raffles, door prizes, and cards will follow the luncheon. Suggested donations are \$7.00 for adults; \$3.50 for ages 5-12; no donations accepted for children under age 5.

Cookbooks will be available for \$10.00 each or two for \$15.00.

Go to the stop sign in town, turn west, then go two blocks to the parking lot at the end of the street. The center is on the north side of the parking lot. Everyone is welcome—so come join us!



#### SENIOR MINISTRY

##### ATTENDANCE

Each week worship is led at various senior housing facilities in the area.

Listed here are the total attendance for the week, number of facilities served, and the average attendance at each facility.

##### Weekly Attendance

Date	Total	Ave	#of Services
5/2/10	272	23	12
5/9/10	231	21	11
5/23/10	267	27	10



Remember  
Food Pantry  
Sunday's are  
June 13  
&  
July 11  
Bring a  
nonperish-  
able item for  
the local  
food pantry.

## JUNE BIRTHDAYS

6/02	Ben Clark	6/18	Ethan Hoffman
6/03	Lon Campbell	6/19	Amy Bushue, Grace Fifield, Kristin Lesniak
6/04	Liam Devore, Addison Muhr, Kelsey Olsen	6/21	Margaret Hoffmann, Isabella Martinez
6/05	Marcia Kiel, Jay Paszotta, Helen Reinemann, Hunter Schwab	6/22	Elizabeth Garlisch
6/08	Mandy Huter	6/23	Kristen Goff, Alfred Lave
6/09	Lyndsey Lyon, Sandra Madsen, Alan Scott, Roman Sinderman	6/25	Gabrielle Fifield, Adelynn Levine, Margy Miller
6/12	Austen Ewald, Kelly Gratschmayr	6/26	Daniel Hayes, Nathan Warner, Matthew Warner
6/13	Sue Harms	6/27	Corinne Kirschbaum
6/15	Bruce Johnson	6/28	Emily Becherer, Dan Lohmeier, Robert Sarver
6/16	Carrie Cruz, David Hammack		
6/17	Holly Gresholdt		

## JUNE WEDDING ANNIVERSARIES

6/01/1974	Keith & Suzanne Lambrecht	6/14/1980	Pete & Christel Springmire
6/02/2007	Brad & Sabrina Urlaub	6/14/2003	Jon & Christine Taylor
6/03/2000	Brad & Janis Baumann	6/16/1972	Morris & Rita Goodwin
6/04/1989	Steve & Dawn Woodbury	6/19/1999	Dan & Amy Shumway
6/05/2004	Brad & Shannon Nelson	6/22/1991	David & Karen Campbell
6/07/1980	Mark & Sandy Whitman	6/27/2009	Luke & Laura Venstrom
6/08/2002	David & Jenny Carlson	6/28/1964	Alan & Kayla Cook
6/09/2007	Alan & Tricia Barendregt	6/28/2008	Derek & Lindasy Simonson
6/09/1973	Don & Vicci Haeseker	6/29/1984	Matthew & Rebekah Ahrens
6/10/1994	Al & Shirley Lave	6/29/1968	Ralph & Mary Benbow
6/12/1970	Pastor Ray & Theresa Krueger	6/30/1979	Gene & Deborah Aska
6/13/1998	Chris & Tiffany Kousoulas		

## JUNE WEDDINGS

6/02/10	Joshua Niemeyer and Angels Schiola
6/12/10	Matthew Buehler and Stephanie Schofield

## JUNIOR CONFIRMATION

The following youth will be confirming their faith on Sunday, June 6th at the 9:00 a.m. worship service:

**David Hammack**

**Kaitlynn Cook**

## THANK YOU

Dear Friends,

Words cannot express the love I feel when I wear the handmade lap robes and I show them off to others. The residents here all remark how you ladies made the lap robes just for me. I tell them women from Immanuel sew for many people.

Each of you have a special place in my heart and sewing is one way you show Jesus' love.

—Louise Pickens

— Note: Sewing will be taking the summer off. We will resume on Tuesday, September 14th. All ladies of Immanuel are welcome to join in the sewing of the quilts and lap robes.

## THOSE SERVING OUR COUNTRY:

Prayers of thanksgiving for Capt. Scott Sorenson, brother of Brad Sorenson, who had been deployed to Afghanistan and has now returned home, as well as Capt. Christopher Denton, grandson of Ed & Carol Denton who has also returned stateside.

Dr. Robert Bejnarowicz

Kaitlan Lave  
(granddaughter of Al & Shirley Lave)

Michael Nelson

Justin Roberts  
(grandson of Glen & Pat Roberts, McLaughlin Base in Texas)

Jeff Madsen (Iraq)  
17th Fires Brigade  
COB Speicher  
APO AE 09393

Eric Thurau  
MALS 26  
Unit 77141  
FPO AE 09509-7141

Derrick Schoo (Kuwait)

Matt Shoop  
Husband of Amanda Thurau,  
to be deployed to Afghanistan  
in June.

We pray for all those serving in the military. If you would like the specific name and address of a loved one added to the prayer list, please contact the office by phone or email or leave a written message in the office. There is also a wonderful opportunity for members to support other troops by visiting

[www.anysoldier.com](http://www.anysoldier.com).

— Thank you

## JULY BIRTHDAYS

7/01	Malachia Hardy-Benjamin, Sophia Martinez	7/13	Kyle Mays, Ryan Mays
7/02	James Pfothenhauer	7/14	Wyatt Fifield, Jacob Lancaster, Jakob Mecklenburg
7/03	Kristin Albrecht, Deloris Baumann Summer Cardinell, Dianne Gautcher, Dorothy Knudson	7/15	Rebekah Ahrens, Floyd Schroeder
7/04	Gretchen Ahrens	7/16	Jennifer Krause, Max Walrod
7/06	Jeff Bannister, Marie Hoffman,	7/17	Jayden Rhodes, Landon Simonson
7/07	Patrick Byrnes, Wendy Rissman, Madelyn Rodgers	7/19	Mary Ebbesen
7/08	Mandy Long	7/20	Jenny Drennan, Isaac Hamel, Stacia Happ, Brad Urlaub
7/09	Dolores Broadway, Darlene Hillman, Kevin Kampf Cameron Mathison	7/21	Steven Krause
7/10	Linda Conrad, Suzanne Lothson, Zach Maurice	7/22	Heidi Gratschmayr, Thomas Lesniak
7/11	Craig Baumann, Roger Lemke	7/24	Victoria Hillegas, Kristina Misic
		7/25	Cynthia Hoffman, Ethan Schultz
		7/27	Olivia Koerner, Robert Miller
		7/28	Harlie Campbell, Alexa Campbell, Keith Lambrecht, Gina Misitano
		7/29	Daniel Byford, Lillian Knecht

## JULY WEDDING ANNIVERSARIES

7/07/2007	Ryan & Tracy Hooper	7/22/1972	Robert & Margy Miller
7/07/1990	Brian & Suzanne Lothson	7/23/1983	Robert & Denise Clark
7/10/1993	Ronald & Dorothy Feldmann	7/26/2008	Marcos & Carrie Cruz
7/12/2008	Chad & Christy Knutson	7/26/1984	Rob & Becky Troutt
7/19/1994	Carl & Mandy Long	7/29/1997	Kevin & Sue Harms

## JUNE WEDDINGS

6/24/10 Angela Haeseker and Brian Pringnitz

## BAPTISM

4/25/2010 Matthew Robert Gratschmayr, infant son of Robert & Jody Gratschmayr.  
Sponsors are Mike & Stacy Dahl.

5/09/2010 Ellie Mae Hames, infant daughter of David & Diana Hames.  
Sponsors are Cathy Yanong and Daniel Rossiter.

If you are a member of Immanuel, and do not see your birthday or anniversary listed, or the date is incorrect, please kindly inform the church office to that our records can be corrected. Thank you

Immanuel Web: Visit us at [ImmanuelDeKalb.org](http://ImmanuelDeKalb.org) (or the college site at [refugelsf.org](http://refugelsf.org))

**Walcamp Outdoor Ministries** is currently looking for musical groups (adult and students, instrumental or vocal) to perform at our **Fall Festival on October 3, 2010**. Please call the office at Walcamp now to sign up your group 815-784-5141.

DATE	TIME	ACOLYTE	COMMUNION	RADIO ANNOUNCER	SOUND BOARD
June 6	9:00 AM	Jacob Cook	Keith Lambrecht	Chris Ewald	Doug Nelson
June 13	9:00 AM	Kristen Hoffman	—	Jen Allen	Doug
June 20	9:00 AM	Kaitlynn Cook	Pete Springmire	Doug Nelson	Nathan Allen
June 27	9:00 AM	Kelsey Olsen	—	Jean Curley	Doug Nelson
July 4	9:00 AM	Hunter Tiggelaar	Ralph Benbow	Chris Ewald	Nathan Allen
July 11	9:00 AM	Tyler Clark	—	Jean Curley	Doug Nelson
July 18	9:00 AM	Riley Marks	Rob Tiggelaar	Chris Ewald	Doug Nelson
July 25	9:00 AM	Lon Campbell	—	Jean Curley	Doug Nelson

**Altar Guild**

June—Carol Schroeder; Theresa Krueger

July—Elaine Dailey; Sharon Lemke

**Contact Elder**

Chris Cook: 815-756-8653

**June Ushers Sunday 9:00 a.m.**

Ted Stone\*

Mary Benbow

Will Michels

Don Chapman

**July Ushers Sunday 9:00 a.m.**

Jerry Bejnarowicz\*

Ann Nelson

Bob Clark

Derick Simonson

**2010 Sponsorship Openings:**

**Flowers: Aug. 1; Sept. 5, 12, 19, 26; Oct. 31; Nov. 14, 24; Dec. 24**

**Radio: Sept. 5, 19, 26; Oct. 10, 24, 31; Nov. 14, 24; Dec. 26**

**To be a radio or flower sponsor:** Call the office to reserve a date. Cost is \$35 for flowers and \$200 for a 60 minute radio broadcast or \$100 for 30 minutes of the broadcast. (Remaining 30 min. could be sponsored by someone else). Flowers may be taken home following the 10:30 service, or you may have them given to one of our shut-ins by a member of the Altar Guild.

**FLOWER SPONSORSHIPS:**

6/06 “In loving memory of my sister, Ruth Carlson and my sister and brother-in-law, Hilda & Paul Shave,” by Elsie Madsen.

6/13 “In honor of Pete & Christel’s 30<sup>th</sup> Wedding Anniversary on June 14<sup>th</sup>,” by Luke & Laura Venstrom

6/20 “In memory of Robert Kirschbaum,” by his family.

6/27 “In loving memory of Marna M. Larson,” from her family.

7/04 to thank and honor TSgt. Michael Nelson, currently serving in Korea, and all servicemen and women for their service to our country by Roger and Ann Nelson.

7/11 “To the glory of God in celebration of 70 years of blessings,” by Roger Lemke.

7/18 Open

7/25 “To the glory of God in celebration of the marriage of Joel Hillman and Allison Worley on Saturday, July 24, 2010, at Salem Lutheran in Sycamore,” by Mike & Darlene Hillman.

**RADIO BROADCAST SPONSORSHIPS:**

6/06 “In celebration of their Confirmation,” by the 2010 Confirmation Class.

6/13 “To the glory of God and in celebration of our 42<sup>nd</sup> anniversary,” by Ralph & Mary Benbow.

6/20 “In remembrance of Roger & Alice Belke’s wedding anniversary on June 25<sup>th</sup>,”

by their family: Nola & Jamie Puente, Marsha & Martin Ramerez, & Connie & Randy Jacob.

6/27 “In remembrance and in honor of their wedding anniversary on June 25<sup>th</sup>,” by Alice Belke.

7/04 “In loving memory of Charles H. Chamberlain, Katie Chamberlain, and Richard A. Chamberlain,” by Chuck & Joyce Chamberlain.

7/11 “The radio broadcast today is sponsored in loving memory of Hildegard Krause by her family to thank our Lord for her ministry among us; to commemorate her birthday (6/28) and to acknowledge their wedding anniversary (7/19).

7/18 Open

7/25 Open

Sun	Mon	Tue	Wed	Thu	Fri	Sat
<h1>June 2010</h1>		1 May 2011 Little Lambs Tuition Due	2	3 8AM Bulletin Deadline	4 Offices Closed 6:30 PM Softball	5 Confirmation Rehearsal
		6 9 AM Worship/ Rite of Jr. Confirmation	7 6:30 PM Softball	8 8:45 AM Bd of Ed 7PM Stewardship Mtg.	9 1PM Staff Mtg.  2:30 PM Niemeyer	10 8AM Bulletin Deadline
13 9 AM Worship 10:15AM Adult Bible Study 10:15AM Youth Bd Softball 6—8PM Youth Group	14	15	16 1PM Staff Mtg. 3PM VBS Closing 7PM Council Mtg.	17 8AM Bulletin Deadline 7:15 PM Outreach Mtg.	18 Offices Closed	19
Vacation Bible School			Relay for Life			
			Immanuel Family Campout			
20 9 AM Worship Immanuel Family Campout	21 6:30 PM Softball	22	23 1PM Staff Mtg.	24 8AM Bulletin Deadline 7PM Reel Spirituality	25 Offices Closed 6PM Wedding Rehearsal	26 3:30PM Berg Wedding
27 9 AM Worship 10AM Youth Car Wash 10:15AM Adult Bible Study	28 Pastor Marty on Vacation thru 7/9 6:30 PM Softball 7PM Book Club	29	30 1PM Staff Mtg.	Tentative University Village Reading Program		

<h1>July 2010</h1>						
				1 8AM Bulletin Deadline	2 Offices Closed	3
				Tentative University Village Reading Program		
4 9 AM Worship Service 10:15AM Adult Bible Study	5 Offices Closed	6 6:30PM Human Care Bd Meeting	7 NO Elders Mtg. 12Noon Staff Lunch.	8 8AM Bulletin Deadline	9 Offices Closed 6:30 PM Softball	10 Pastor Marty Returns from Vacation
11 9 AM Worship Service 10:15AM Adult Bible Study 10:15 NYG Parent/Youth Mtg. 4PM LYF Circuit Wacky Olympics 6—8PM Youth Grp	12 Darlene on Vacation thru 9/15 6:30 PM LWML Salad Supper 6:30 PM Softball	13 7PM Stewardship Mtg.	14 1PM Staff Mtg.	15 8AM Bulletin Deadline	16 Offices Closed	17
				17—21 LYF National Gathering New Orleans		
18 9 AM Worship Service 10:15AM Adult Bible Study	19 6:30 PM Softball	20	21 1PM Staff Mtg.	22 8AM Bulletin Deadline  Darlene on Vacation Thru 8/3	23 Offices Closed Wedding Rehearsal 6:30 PM Softball	24 Pringnitz/Haeseker Wedding
17—21 LYF National Gathering—New Orleans						
25 9 AM Worship Service 10:15AM Adult Bible Study 6—8PM Youth Group	26 7PM Book Club	27 9:30AM Newsletter Assembly	28 1PM Staff Mtg.	29 8AM Bulletin Deadline	30 Offices Closed	31

Immanuel Lutheran Church  
& Student Center  
511 Russell Road

NON-PROFIT  
ORG  
U.S. POSTAGE  
PAID



9:00 AM Worship Service  
10:15 AM Adult Bible Study

RETURN SERVICE REQUESTED

### *Happening this summer at Immanuel!*

- Thru August 15: **9:00 a.m. One combined worship service**
- Sunday, June 6: **Junior Confirmation**
- June 14—16: **Vacation Bible School at Walcamp**
- June 18—19: **Relay for Life**
- June 18—20: **Immanuel Family Camp Weekend**
- Monday, July 12: **6:30 p.m. LWML Salad Supper**
- Sunday, August 15: **9:00 a.m. Outdoor worship service & New Member Welcome**  
**10:30 a.m. Church Picnic**



### **Immanuel Family Campout**

Plan now to join the 4th annual summer campout at Walcamp. Dates are June 18-20. No matter your camping experience, family size or ages.

Plan to join in the many camp activities that will be available for our usage:

- swimming**      **canoeing**
- hiking**          **campfires**

- Saturday evening: pot-luck style meal**
- evening worship service**
- hayride**

Your family will have the freedom to select activities that you want to participate in.

**Join us for part or all of the weekend.**

Tent and electric sites are available on a first come-first served basis. Cabins are even available for the weekend on a first come/first served basis. Keith & Jana Peters will chaperone two cabins set aside specifically for youth! Register by contacting the church office. Cost is \$20 for tent camping

